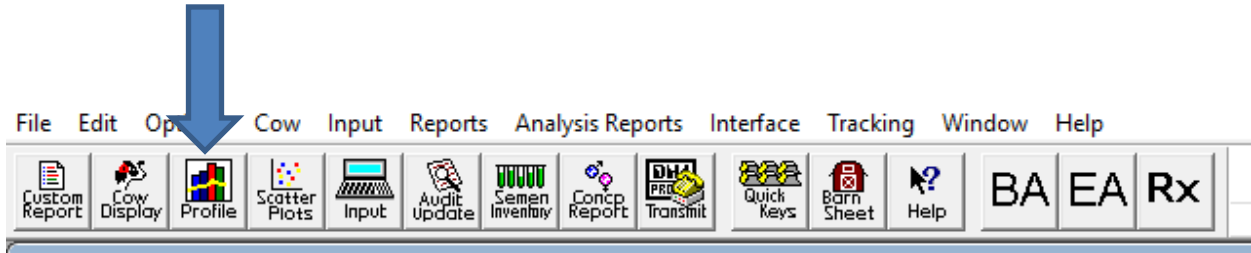


Average herd size (Dry and Lactating Cows):

Click on the Herd Profile Icon.



Look at value 723 Herd Average Cows in the Herd.

Personal Herd Profile for April 28, 2015

Description	County	State	Region	Goals	My Data	Pctl	Regn Q1	Regn Q2	Regn Q3	Regn Q4
107 - % Protein or SNF	3.29%	3.22%			3.10%	17	3.25%	3.39%	3.46%	3.32%
107-3 - % Protein or SNF L3	3.27%	3.18%			3.10%	22	3.23%	3.35%	3.41%	2.91%
116 - Days In Milk	192	191			235	87	190	188	173	181
116-1 - Days In Milk L1	203	200			247	87	188	195	175	184
116-2 - Days In Milk L2	187	186			201	61	195	180	170	186
116-3 - Days In Milk L3+	181	184			238	96	188	184	172	176
225-1 - L1 Fcm Avg Chg 30 Days	25.4	17.4	25.1		0.2	30	25.1	24.9	0.3	0.8
225-2 - L2 Fcm Avg Chg 30 Days	2.5	2.5	2.0		1.8	43	2.1	2.0	2.5	1.8
225-3 - L3 Fcm Avg 30 Day Chg	3.1	3.3	2.9		2.7	39	2.9	2.9	3.3	2.6
225 - Fcm Avrg 30 Days Chg	1.4	1.6	1.3		1.4	43	1.4	1.1	2.0	1.7
790 - Herd Average Annual Ecm					127					
101 - Cows In Herd	3783	1546	8244		1556	74	3369	3362	8007	7131
723 - Herd Average Cows In Herd	3773	1415	7435		1656	74	3216	3122	6193	4767

Percent of herd that are first Lactation cows:

In the Herd Profile look under inventory and Divide 101.1 (Cows in Herd L1) by 101 cows in the Herd then multiply by 100.

INVENTORY:						
101-1 - Cows In Herd L1	1618	646	3283		681	7.
101-2 - Cows In Herd L2	990	400	2042		289	6.
101-3 - Cows In Herd L3	1175	500	2920		586	7.
101 - Cows In Herd	3783	1546	8244		1556	7.
110-1 - Cows In Milk L1	1434	562	2800		608	7.
110-2 - Cows In Milk L2	875	351	1754		273	6.
110-3 - Cows In Milk L3	1064	446	2597		555	7.
110 - Cows In Milk	3373	1359	7151		1436	7.
502 - Cows Due To Calve 1 Mo T	2684	1246	6114		61	

Average Calving Interval:

In the Herd Profile look at the following.

REPRODUCTION:				
322 - DIM at 1st Breeding	69	70	70	75
419 - Days Open	116	124	120	187
520 - Cows Not Brd X Dys Mlk	86	56	352	38
519-P - % Do Not Breed				1%
418 - % Preg First Breeding	42%	41%	42%	32%
416 - Services / Conc (Preg)	2.35	2.34	2.34	2.97
318 - % Heats Detected	80%	72%	76%	59%
320 - Last Calving Interval	12.8	13.0	12.9	14.3
321 - Next Calving Interval	13.1	13.2	13.2	15.3

Breeds and does over 25% of cows in the herd have a non-Holstein Parent?

Create a new report by doing the following:

1. Click on New

2. Call the new report "Breed"

3. Add the column Headings (Rt Click and Insert)

CTL	COWBRD
1	
1	B
408	H
24	J
1	SR
1012	U
1	X
1448	

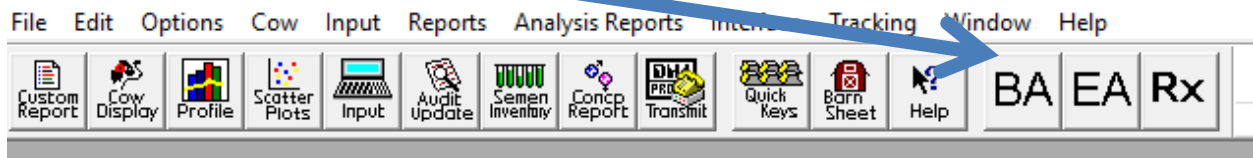
Mnemonic	Operator	Operand
CTLH	NE	H
STATUS	LT	6

4. Click the Sort button. Then the down arrow and choose "CowBrd" and yes under subtotal

5. Right Click under the CTL column and click count, and then run the report.

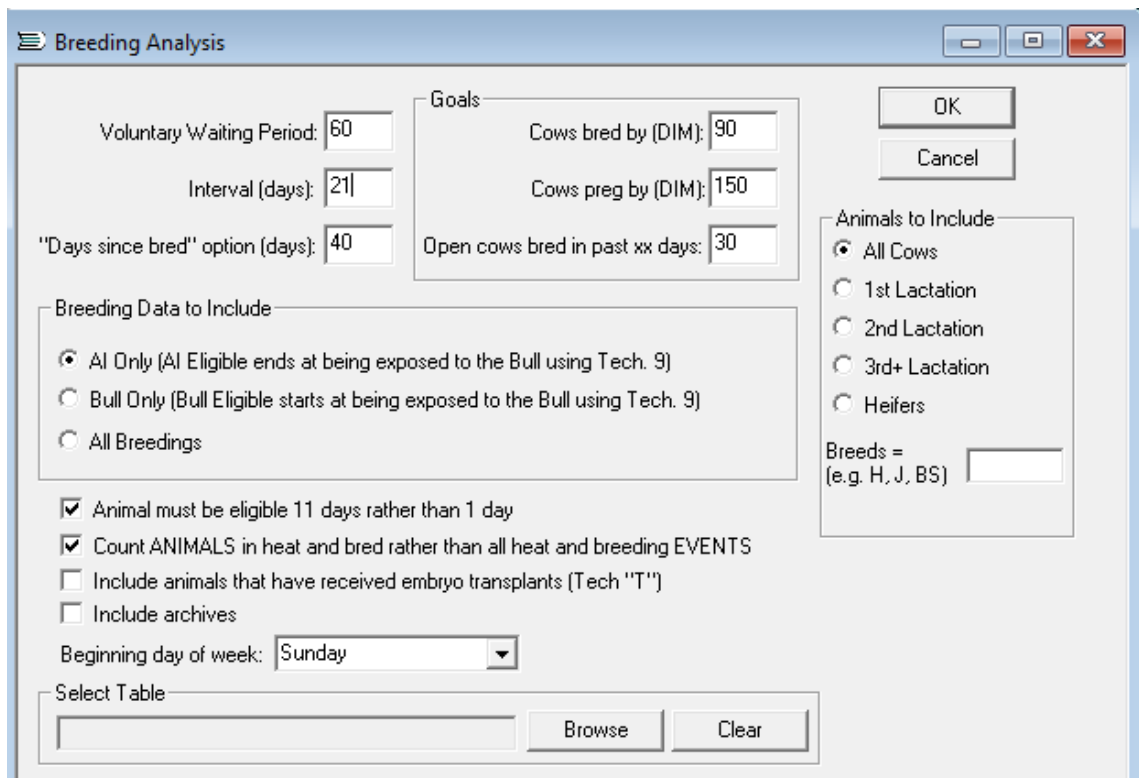
Voluntary Waiting period Policy:

Left Click on the "BA" Button

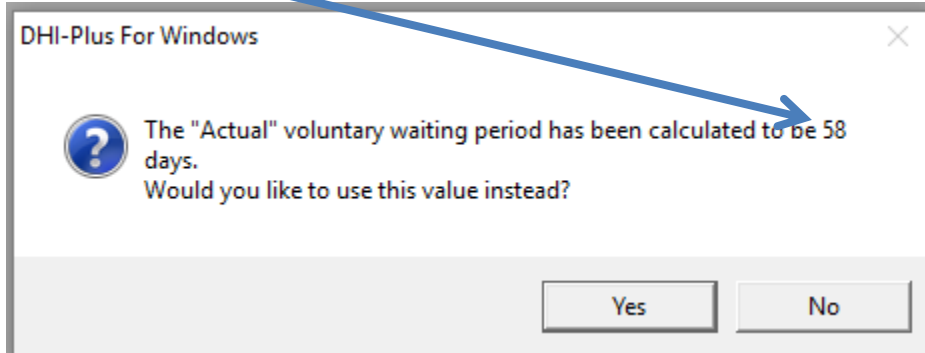


When this screen opens make sure the following options are chosen as shown below:

Then Click Okay



The Voluntary waiting period will be Calculated for you. Then Click Yes . The Voluntary waiting period is shown



Percent of pregnant cows pregnant by 150 DIM. Average days to first breeding.

While in the breeding analysis click on the tab that says STATS

DIM @ 1 Brd % Pregnant by 150 days

Breeding Analysis Results - AI Only - All Cows - VWP=58

21d Pregnancy Rate by DIM | Pregnancies by Days Open | Non-Pregnant by DIM | Stats1 | What if I Change...?

Lact #	# Cows	# Preg	% Preg	DIM @ 1Brd	%Bred by 90DIM	# >= 90DIM Still Not Bred	%Preg by 150DIM	# :
1	670	228	34%	76	77%	136	24%	44
2	299	84	28%	79	63%	101	21%	21
3+	586	264	45%	77	88%	50	36%	31
Total	1555	576	37%	76	79%	287	28%	97

Close
Print Page
Print All

Average 21 day pregnancy rate

While still in the Breeding analysis, click on tab "21 Pregnancy rate by date"

The bottom number is the average over time

From	To	# H-Elig	# Heat	Heat Rt	# P-Elig	# Bred	# Preg	Conc Rt	Preg Rt	DIM @ Conc.
8/17/2014	9/6/2014	345	213	61.7%	345	210	32	15.2%	9.3%	92
9/7/2014	9/27/2014	348	185	53.2%	348	183	35	19.1%	10.1%	116
9/28/2014	10/18/2014	345	201	58.3%	345	200	34	17.0%	9.9%	119
10/19/2014	11/8/2014	348	197	56.6%	348	196	49	25.0%	14.1%	127
11/9/2014	11/29/2014	341	162	47.5%	341	154	37	24.0%	10.9%	112
11/30/2014	12/20/2014	397	218	54.9%	397	209	53	25.4%	13.4%	124
12/21/2014	1/10/2015	412	223	54.1%	412	218	69	31.7%	16.7%	129
1/11/2015	1/31/2015	410	215	52.4%	410	212	60	28.3%	14.6%	130
2/1/2015	2/21/2015	404	172	42.6%	404	171	54	31.6%	13.4%	138
2/22/2015	3/14/2015	424	266	62.7%	424	260	91	35.0%	21.5%	145
3/15/2015	4/4/2015	375	217	57.9%						
4/5/2015	4/25/2015	443	255	57.6%						
Average				55.0%				25.5%	13.6%	

How many cows left the herd during the last year (all reasons)?

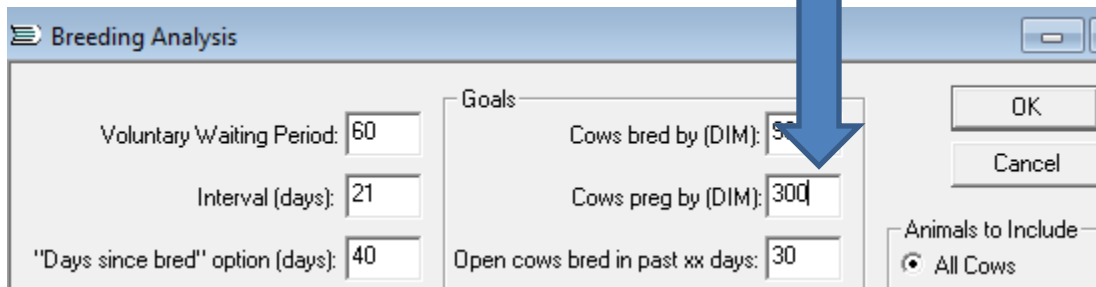
Of the total cows number of cows that left how many left the herd for reproductive reasons?

In the herd Profile look under the column heading Left Herd

LEFT HERD:				
734 - % Cows Culled	41%	42%	42%	44%
736 - Rel Value Cows Left Herd	93	92	92	93
732 - Cows Died in Last Year	272	99	437	123
731 - Annual Cows Sold For Beef	1284	487	2543	638
733 - Sold for Dairy in Last Yr	1	8	116	3
728 - No Cows Beef Rep/prb An	163	30	123	51

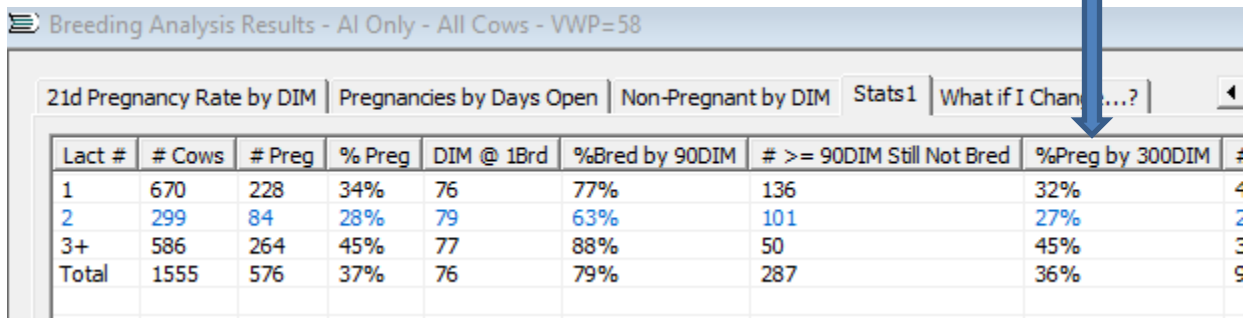
Percent of the herd that are greater than 300 DIM and open.

In the breeding analysis (BA button) change the options to cows pregnant by to 300 days



The image shows a 'Breeding Analysis' dialog box. It has several input fields and buttons. A blue arrow points to the 'Cows preg by (DIM):' field, which is set to 300. Other fields include 'Voluntary Waiting Period: 60', 'Interval (days): 21', '"Days since bred" option (days): 40', 'Goals: Cows bred by (DIM): 90', and 'Open cows bred in past xx days: 30'. There are 'OK' and 'Cancel' buttons on the right, and an 'Animals to Include' section with a radio button for 'All Cows'.

Under the Sats tab look at % pregnant by 300 days. 100 minus this number by 100 to get percent open past 300 DIM.



The image shows a 'Breeding Analysis Results - AI Only - All Cows - VWP=58' window. It has several tabs: '21d Pregnancy Rate by DIM', 'Pregnancies by Days Open', 'Non-Pregnant by DIM', 'Stats1', and 'What if I Change...?'. A blue arrow points to the 'Stats1' tab. Below the tabs is a table with the following data:

Lact #	# Cows	# Preg	% Preg	DIM @ 1Brd	%Bred by 90DIM	# >= 90DIM Still Not Bred	%Preg by 300DIM	#
1	670	228	34%	76	77%	136	32%	4
2	299	84	28%	79	63%	101	27%	2
3+	586	264	45%	77	88%	50	45%	3
Total	1555	576	37%	76	79%	287	36%	9